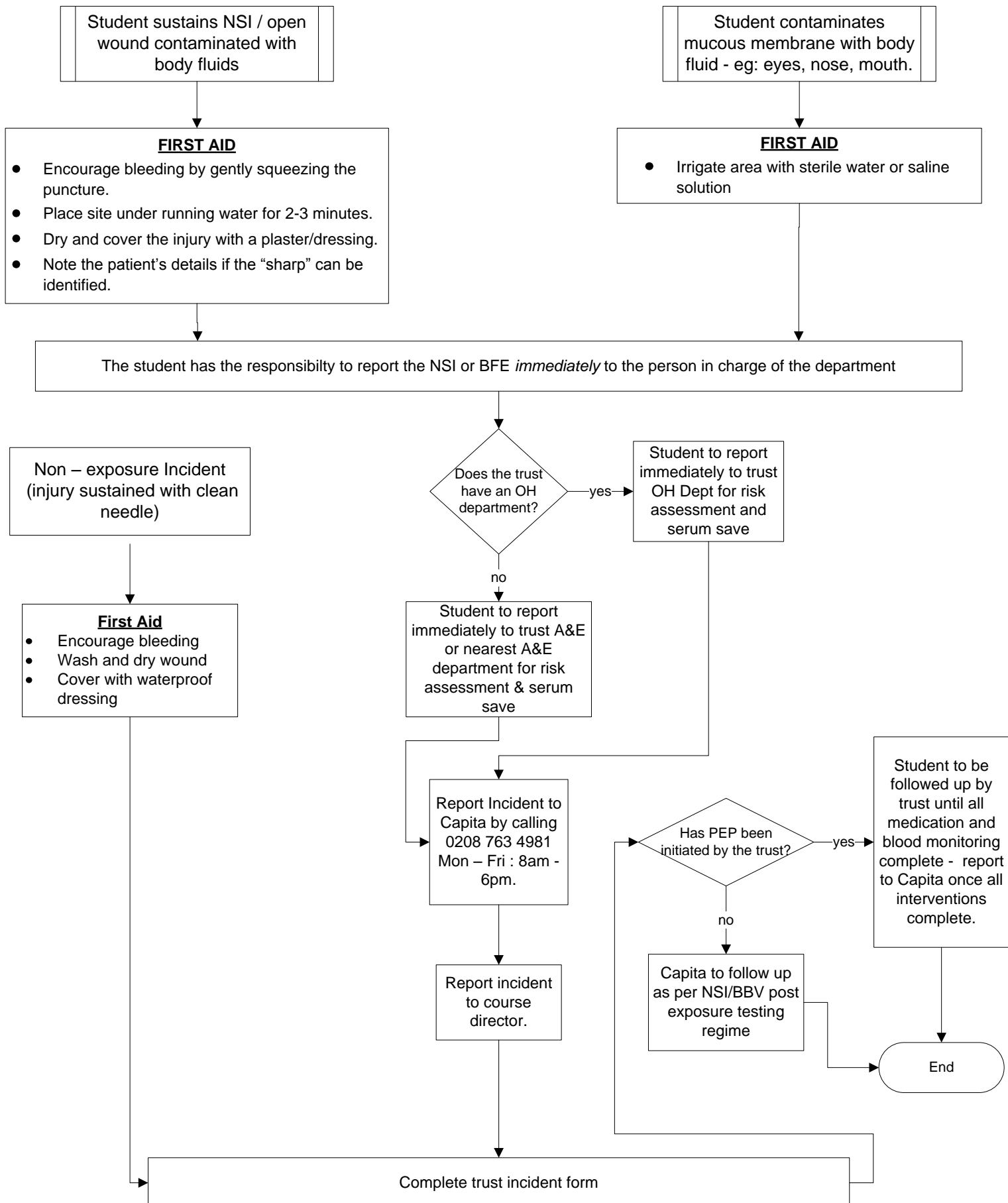


LSBU

Needle Stick Injury(NSI) / Body Fluid Splash (BFS) Process for Students on Clinical Placements



Student sustains NSI / open wound contaminated with body fluids

Student contaminates mucous membrane with body fluid - eg: eyes, nose, mouth.

FIRST AID

- Encourage bleeding by gently squeezing the puncture.
- Place site under running water for 2-3 minutes.
- Dry and cover the injury with a plaster/dressing.
- Note the patient's details if the "sharp" can be identified.

FIRST AID

- Irrigate area with sterile water or saline solution

The student has the responsibility to report the NSI or BFE *immediately* to the person in charge of the department

Non – exposure Incident (injury sustained with clean needle)

First Aid

- Encourage bleeding
- Wash and dry wound
- Cover with waterproof dressing

Does the trust have an OH department?

Student to report immediately to trust OH Dept for risk assessment and serum save

Student to report immediately to trust A&E or nearest A&E department for risk assessment & serum save

Report Incident to Capita by calling 0208 763 4981 Mon – Fri : 8am - 6pm.

Report incident to course director.

Has PEP been initiated by the trust?

Capita to follow up as per NSI/BBV post exposure testing regime

Student to be followed up by trust until all medication and blood monitoring complete - report to Capita once all interventions complete.

End

Complete trust incident form